

# Quick Setup Guide – Bridgemate III System & ACBLscore

**Flash Drive includes all the Bridgemate System software, firmware, drivers and User Files**

## A. Software Required:

- See enclosed Flash Drive or download from [www.bridgemate.us](http://www.bridgemate.us): Bridgemate Control software [BCSsetup4-1-18.exe](#)
- ACBLscore (Windows version) – Download from [www.acbl.org](http://www.acbl.org) [Acbl833w.exe](#)

## B. Install Bridgemate Control Software (BCS).

BCS controls communication with the Bridgemate hardware and exchanging data with ACBLscore through the BCS/ACBLscore, joint-use “results” (.bws) file. By default, the Bridgemate program will be installed in the folder C:\Program Files\Bridgemate Pro or C:\Program Files (x86)\Bridgemate Pro.

Note: The BCS “full install” program will offer to install the USB Server driver. Bridgemate III users: Let the program do this.

Special **W 7, 8/8.1, 10 & 11 64-bit systems** note: The BCS default installation folder is C:\Program Files (x86)\Bridgemate Pro.

In ACBLscore the BML command must be used to “locate” the BMPPro.exe file in this “different” (x86) folder – see H (over).

## C. Prepare your computer for the Bridgemate Server.

**First:** The driver normally will be installed by the BCS “full-install” program. Alternatively, run the Flash Drive's Drivers\Bridgemate III\BMate3Drv\_Setup1.exe driver- installation file – with the server **not** installed.

**Second:** When installation is complete, connect the server to a USB port on your PC. Windows should recognize the server and complete the hardware installation.

## D. Start the BCS program.

Normally, BCS is started by ACBLscore; but BCS should be started by itself – to verify Server connectivity – and set BCS options.

Windows 7: Start → All programs → Bridgemate Pro → Bridgemate Control Software;

Windows 8/10/11: Press the Ctl - ESC → This brings up the Start menu → Select Bridgemate

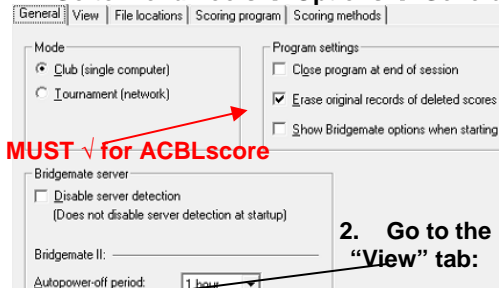
The first time BCS is opened with a new server attached – a “Region selection” screen will appear.

Select “North America” and “Set.” click “Yes” to confirm “American Style” contract notation. The BCS screen upper-left display “Server Information” should show “Connected” and North America.

| Server information    | Value          |
|-----------------------|----------------|
| Bridgemate server     | Connected      |
| System                | Bridgemate III |
| Port                  | USB            |
| Hardware version      | FF.255         |
| Firmware version      | 1.1.3          |
| Communication version | 6              |
| Battery level         | 100%           |
| Channel               | 0              |
| Region                | North America  |

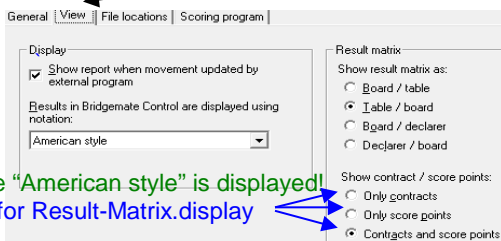
## E. Select BCS software options.

### 1. Go to menu Tools → Options → General



Be sure “American style” is displayed!  
Select for Result-Matrix.display

### 2. Go to the “View” tab:

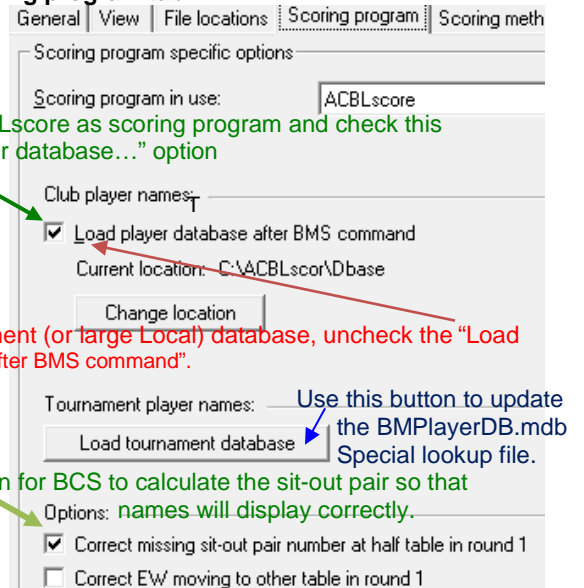


### 3. Go to the File locations tab:

The default folder is normally a Windows ® hidden folder; click on “other folder.”  
C:\ACBLSCOR is an alternative

default location is recommended for the National Tournament (or large, local) databases.

### 4. Go to the Scoring program tab:



### 5. Click OK to close Options – General.

**6. Option Settings.** For a complete options description see our website [www.bridgemate.us](http://www.bridgemate.us) → Guides → “Options Settings” or the same file on the USB flash drive This in the “User Files - Adobe® Acrobat” folder.”

**7. Player numbers/names** are stored in the server's internal player database. See: Server → Player management and select which source(s) should be uploaded to the server.

**8. Special Note:** In order for the server and Bridgemates firmware to be updated, your Bridgemate system must be “registered.” On [www.bridgemate.us](http://www.bridgemate.us) go to App → Club Logon and create an account. If you are using the Bridgemate App you will already have an account. If necessary, see the last paragraph under **Register Bridgemate.**

## 9. Go to menu Tools → Options → Bridgемate

Use Bridgемate settings specified by:

☐ Scoring program (No session active)

☒ Bridgемate Control

Screen and device settings

Brightness level: 6

Dim screen: 10 seconds

Screen off: 20 seconds

Entering sleep mode: 600 seconds

Total autopower-off time: 630 seconds

Audio volume: 2

Language: English

Connection mode: Online

Options for tournament director

PIN code: 0000

☐ Allow TD calls from Bridgемate

☒ 'No play' requires ID confirmation

Results and scores

☐ Allow re-entry of board results

Display result using: American style

Show previous board results: Show all board results

☒ Show percentages of board results

Recap of own board results: Always enabled

Display score column as: 2 columns with separate NS and EW

Lead card

Lead card entry: Disabled

Player and player numbers

Player number entry at beginning of round: Enabled in all rounds

☒ Allow entry during play

☐ Confirm starting positions

Display of players: Wind rose - north down (rotated)

Additional information

Ranking: Show ranking at end of session only

☒ Next seatings at end of round

Hand records

☐ View hand records

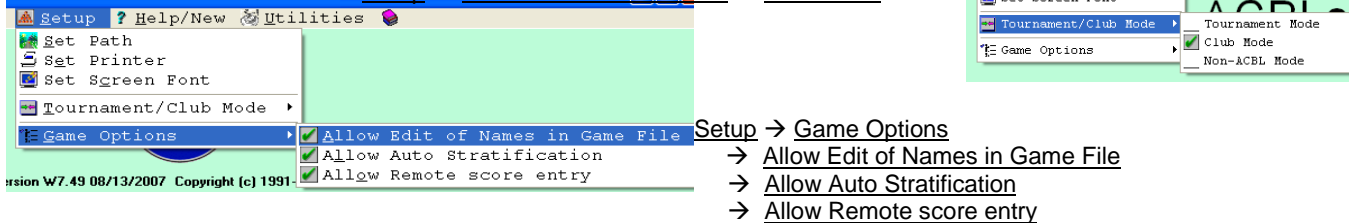
Enter hand records: Disabled

- “Bridgемate Control” should be checked.
- If you wish to capture “Lead card” set this page’s options as desired.
- Verify that these variables are set as shown:

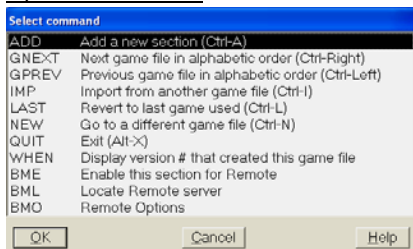
F. The Bridgемate Scoring System is now ready to be used with ACBLscore.

## G. Start ACBLscore

From the main screen – select: Setup → Tournament / Club Mode → Club Mode



H. Open a Game File



It is not necessary to set up an actual game to make the following changes.

Press F11 (or Alt-L) to display the “Select Command” screen.

If necessary [such as on 64-bit Windows systems where BCS is installed in the “(x86)” folder - see item B on front side], highlight the “BML Locate Remote server” and press ENTER or click “OK.” Then browse to the BCS installation folder and select BMPPro.exe [note the “.exe” may not be visible] as the “Remote program.”

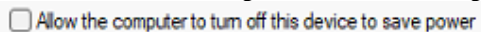
ACBLscore’s Bridgемate options should now be SET.

## I. Use the Windows® Control Panel (Power options) to

### Deactivate Standby, Hibernate and USB Selective Suspend.

During a game, if the PC goes into Standby or Hibernate, scores will no longer post into ACBLscore. To reactivate posting, the PC must be rebooted. When BCS restarts, results for hands played during the reboot will be written into the results file and will be available for posting into ACBLscore along with prior unposted scores.

See the “Standby Disable” folder on the Bridgемate Flash Drive for detailed information on this required action. Alternatively, go to [www.bridgемate.us/guides/disable-pc-standby/](http://www.bridgемate.us/guides/disable-pc-standby/). In Standby - BCS’s writing scores into the results (.bws) file is compromised.. It is also necessary to disable Windows’ 11 turning off USB ports. Windows doesn’t see the Bridgемate software interrogating the server once a second and will turn off the USB port unless this option is unchecked.



Since we don’t know which controller the server works through, select → Properties and then →Power Management. Do this on all USB ports.