

Quick Setup Guide – Bridgemate II System & ACBLscore

Flash Drive includes all the Bridgemate System software, firmware, drivers and User Files

A. Software Required:

- See enclosed Flash Drive or download from www.bridgemate.us: Bridgemate Control software [BCSsetup3-9-6.exe](#)
- ACBLscore (Windows version) – Download from www.acbl.org [Acbl833w.exe](#) (or latest version)

B. Install Bridgemate Control Software (BCS). BCS controls communication with the Bridgemate hardware and exchanging data with ACBLscore through the BCS/ACBLscore, joint-use “results” (.bws) file. By default, the Bridgemate program will be installed in the folder C:\Program Files\Bridgemate Pro or C:\Program Files (x86)\Bridgemate Pro.

Note: The BCS “full install” program will offer to install the USB Server driver. Bridgemate II users: Let the program do this.

Special **W 7, 8/8.1, 10 & 11 64-bit systems** note: The BCS default installation folder is C:\Program Files (x86)\Bridgemate Pro. In ACBLscore the BML command must be used to “locate” the BMPPro.exe file in this “different” (x86) folder – see H (over).

C. Prepare your computer for the Bridgemate Server.

First: The driver normally will be installed by the BCS “full-install” program. Alternatively, run the Flash Drive’s [Drivers\USB Server\BM2serverDriverInstall.exe](#) driver- installation file.

Second: Using the USB cable, connect the server to a USB port. On the next screens, specify “search (or browse) for the driver (automatically).”

More detailed information is in [User Files - Adobe® Acrobat\USB Server Driver Installation.pdf](#) file.

D. Start the BCS program.

Normally, BCS is started by ACBLscore; but BCS should be started by itself – to verify Server connectivity – and set BCS options.

Windows 7: Start → All programs → Bridgemate Pro → Bridgemate Control Software;

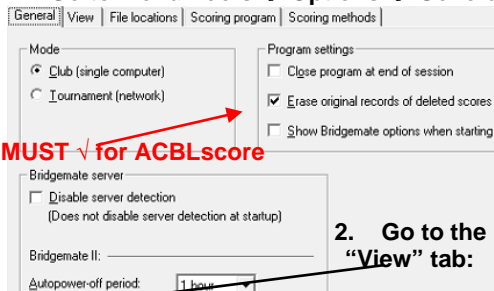
Windows 8/10: Press the Ctl - ESC → This brings up the Start menu → Select Bridgemate

The first time BCS is opened with a new server attached – a “Region selection” screen will appear. On the screens that follow select “North America” and click “Yes” to confirm “American Style” contract notation. The BCS screen upper-left display “Server Information” should show “Connected” and North America.

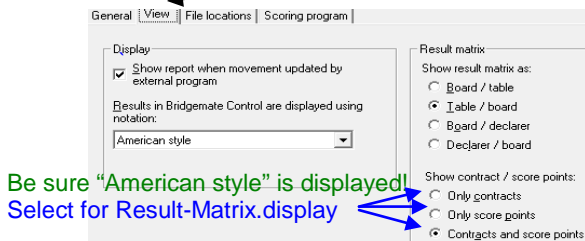
Server information	Value
Bridgemate server	Connected
System	Bridgemate II
Port	USB
Hardware version	1.1
Firmware version	3.1.1d
Communication version	1.1
Battery level	100%
Channel	0
Region	North America

E. Select BCS software options.

1. Go to menu Tools → Options → General



2. Go to the “View” tab:



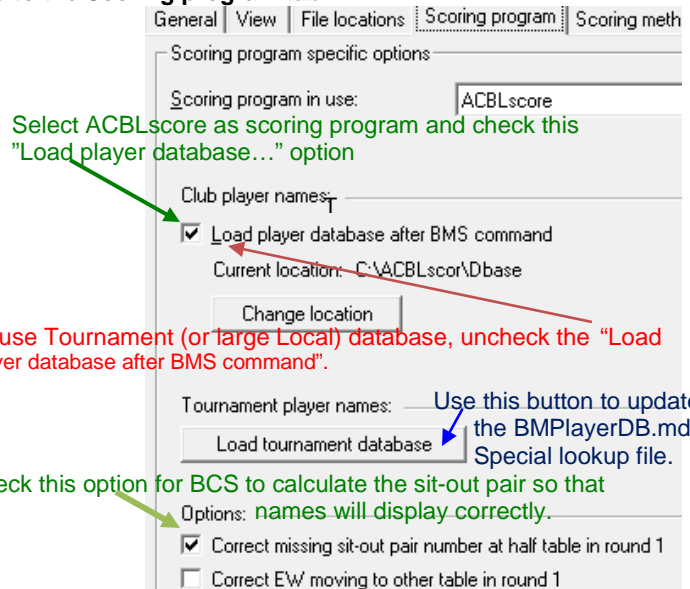
3. Go to the File locations tab:

The default folder is normally a Windows ® hidden folder; click on “other folder.” C:\ACBLSCOR is an alternative

This default location is recommended for the National Tournament (or large,

See more information in the User Manual Chapter 3, page 16.

4. Go to the Scoring program tab:



5. Scoring Methods – Special for IMP scoring.

6. Suspicious Contracts.

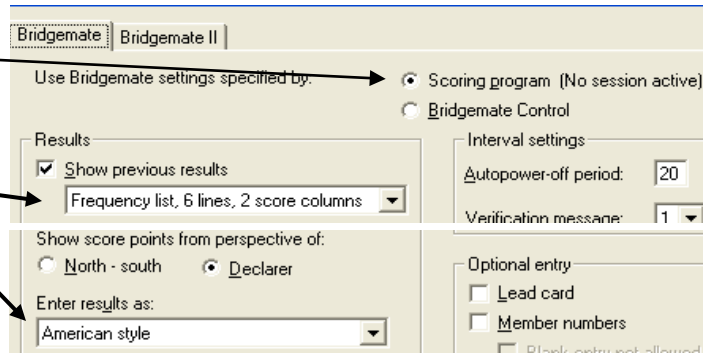
BCS now includes the ability to check for suspicious contracts. For more details see the User Guide, Chapter 3. **Note:** A game must be active in BCS in order to configure.

7. Option Settings. For a complete options description see our website www.bridgemate.us → How-To Guides → “Options Settings” or the same file on the USB flash drive in the “User Files - Adobe® Acrobat” folder.”

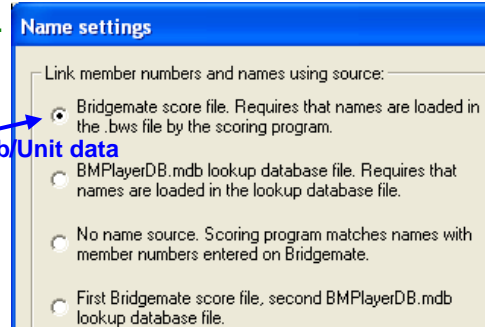
8. Click OK to close Options – General

9. Go to menu Tools → Options → Bridgemate

- “Scoring Program” will normally be checked.
- If you wish to capture “Lead card” or “Group Sections” for Bridgemates to display “travelers” across sections, select “Bridgemate Control” and set this page’s options as desired.
- Verify that these two variables are set as shown:



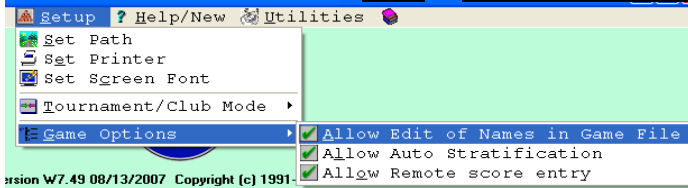
10. Go to the “Bridgemates II” tab.



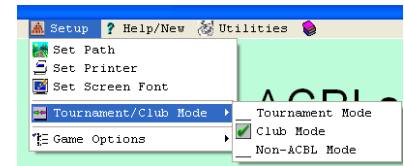
F. The Bridgemate Scoring System is now ready to be used with ACBLscore.

G. Start ACBLscore

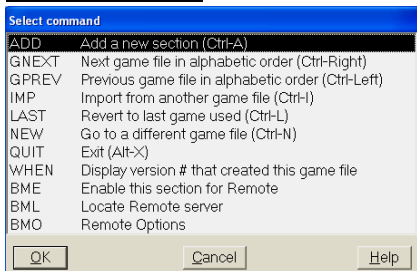
From the main screen – select: Setup → Tournament / Club Mode → Club Mode



- Setup → Game Options
- Allow Edit of Names in Game File
 - Allow Auto Stratification
 - Allow Remote score entry



H. Open a Game File

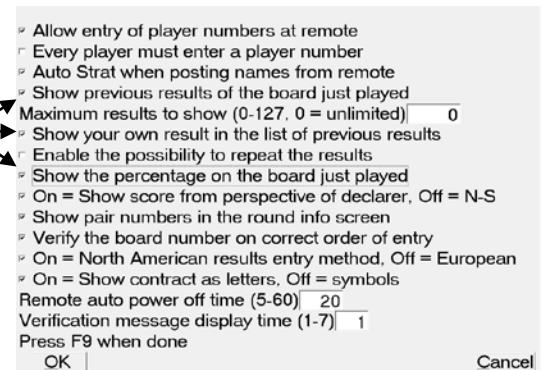


It is not necessary to set up an actual game to make the following changes.

Press F11 (or Alt-L) to display the “Select Command” screen.

If necessary [such as on 64-bit Windows systems where BCS is installed in the “(x86)” folder - see item B on front side], highlight the “BML Locate Remote server” and press ENTER or click “OK.” Then browse to the BCS installation folder and select BMPro.exe [note the “.exe” may not be visible] as the “Remote program.”

ACBLscore’s Bridgemate options should now be SET.



I. Highlight the “BMO Remote Options” – press ENTER, or click “OK.” Bridgemate options are normally controlled by ACBLscore. Typical options are shown to the right. Once the Bridgemate Remote Options have been selected, they remain in effect for all future games – or until they are changed.

Tournaments – and many clubs – do not allow players to see results of boards played at other tables. To disable viewing – uncheck these options.

ACBLscore does not support the “Lead Card” Bridgemate option. To capture the Lead Card, set Bridgemate options to be controlled by BCS – and check the “Lead card” option there. Also, use BCS options to “Group sections” for traveller displays across sections.

J. Use the Windows® Control Panel (Power options) to

Deactivate Standby, Hibernate and USB Selective Suspend.

During a game, if the PC goes into Standby or Hibernate, scores will no longer post into ACBLscore. To reactivate posting, the PC must be rebooted. Close BCS and ACBLscore – then reboot the PC. Re-open the ACBLscore game file and use BMR to restart BCS (without erasing the server). Bridgemates and the server will normally continue to operate during the reboot. When BCS restarts, results for hands played during the reboot will be written into the results file and will be available for posting into ACBLscore along with prior unposted scores.

See the “Standby Disable” folder on the Bridgemate Flash Drive for detailed information on this required action. Alternatively, go to www.bridgemate.us/how-to-guides/disable-pc-standby/. In Standby - BCS’s writing scores into the results (.bws) file is compromised..