

Recommended ACBLScore and Bridgemate Control Software (BCS) Option Settings:

Open **ACBLScore** to a recent (or new) game.
Then F11 → BMO

These are typical – complete options.

If you do not display Travelers, uncheck:

Pro: Check if show scores at other tables.

Leave unchecked if do not show Travelers.

II: Leave unchecked.

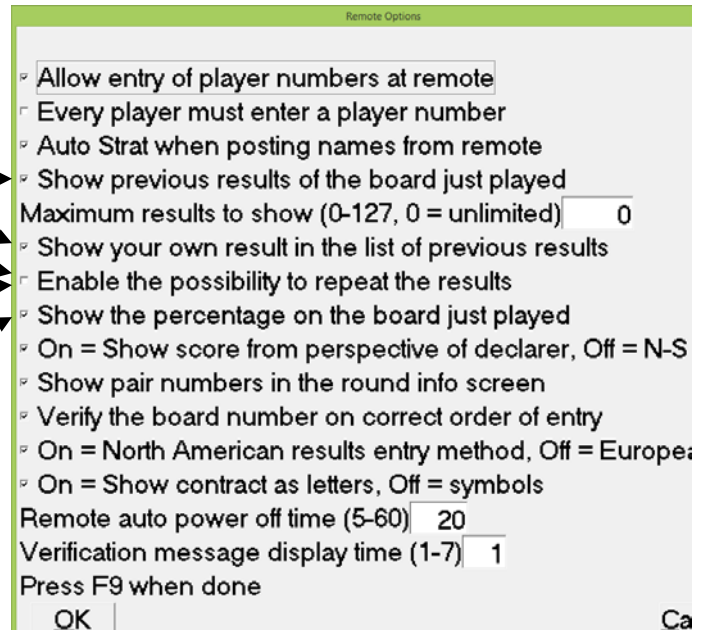
If you do not show on board just played, uncheck.

All the others = as shown.

Special Note:

These “basic” Bridgemate Options may also be controlled by BCS. **Lead card** and **Group Sections** is only available using BCS options.

See Page 3 for BCS option setting info.



Open **Bridgemate Control Software (BCS)**, by itself, with the server attached. There may be an icon on your desktop for this. If not, go to the START button (lower left) → All Programs → Bridgemate Pro → Bridgemate Control Software. For Windows 8/8.1 & 10: Windows key + Q → search for Bridgemate Control Software.

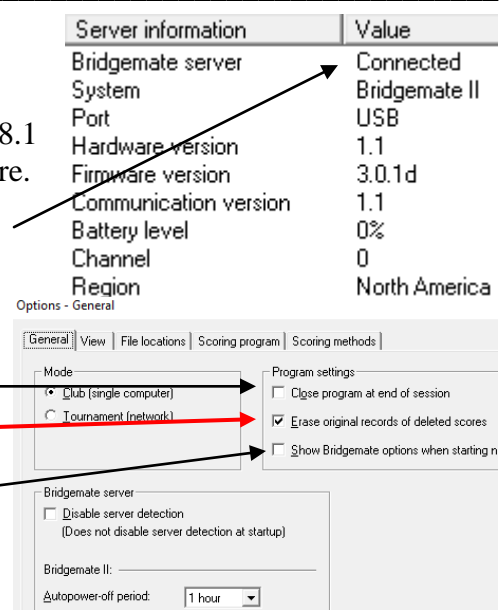
- When BCS is open on the screen, verify the Server is shown as “Connected”

- Go to Tools → Options → General

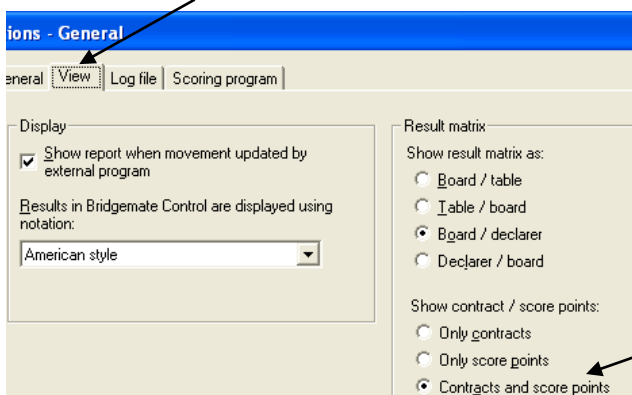
Optional: To have BCS close automatically at end of game

With ACBLScore – Erase... **must be checked.**

To view the Bridgemate settings before the Bridgemate system is actually started, check This allows the TD to verify if all settings are correct and make changes where needed – before the movement is actually loaded into the server.



- Go to the View tab:



The Result matrix display can be changed to whichever display is best. This is something to experiment with.

Typically:

- Mitchell: Board/table or Table/board
- Howell: Board/declarer or Declarer/board

Most people find that

“Contracts and score points” is the best.

- Go to the File locations tab:

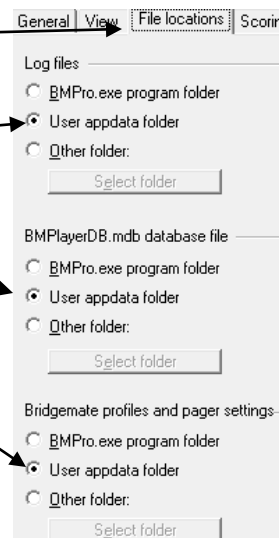
BCS 3.1.2 (or later)

The installation default locations are recommended.

BCS upgrades from previous versions may have other settings. These should continue to work acceptably.

Special note for PC's with multiple BCS users:

In order to have a single BCS log file for everyone and a single BMPlayerDB.mdb database file (for large Databases) – use the “Other folder” settings shown above for previous BCS versions.



- Go to the Scoring program tab:

Select “ACBLScore” as the scoring program:

Check this option so that the local database is loaded into the results (.bws) file for each game.

When using the **large ACBL national database** – or a **large local database** – **uncheck this:**

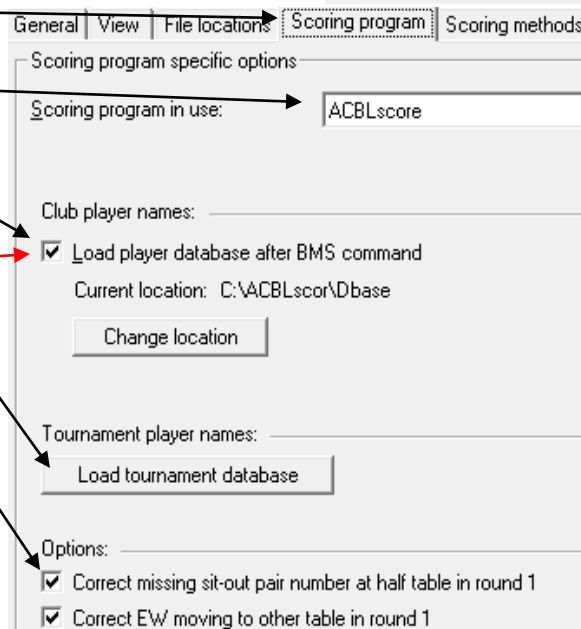
See the Bridgemate.US website for [instructions](#) on large databases and use the Load tournament database

With this option is checked, game setup in ACBLScore may be for the actual ½ table – and the sit-out pair names will display correctly. For Rover movements, see the Bridgemate.US website – [Names Display](#)

Special note: Howell movements only. Be sure the phantom pair is EW in round 1; NS will be the sit-out pair. Use N/S or E/W for Mitchell movements.

When players manually make hands (from printouts) – and then players and hands move to different tables, check this option; BCS will interpret the moves so that names will display correctly.

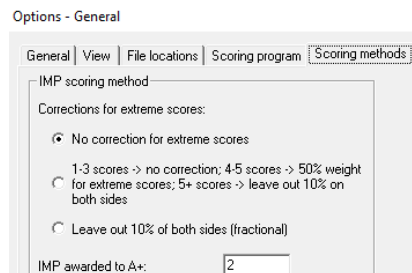
Note: Players enter their numbers at their home tables before moving.



- Scoring methods tab:

This special feature is normally not used.

Live ranking and scores/rankings in the Bridgemate app are calculated by BCS. The scoring method is specified by the scoring program and cannot be modified in BCS. However, the method of calculating the date score in IMP scoring can be configured in BCS. Currently, three methods are available:



More detail is available in the Bridgemate II User Manual, Chapter 3, page 17.

To save these “General” options, click OK (lower right).



Option Settings in BCS:

- Go to: Tools → Options → Bridgemate
With Scoring program” checked, these “basic” Bridgemate options will be controlled by ACBLscore.

BCS will use ACBLscore (F11→BMO) “basic” options.

SCORE	RECAP	BOARDS	21-24
21:4H	N	6	680
22:3NTxW		3	750
23:2C	S	-1	100
24:6Sx	N	6	1210

With Bridgemates II – select “2 score columns.” This changes the Bridgemate results display so that NS scores will be slightly to the left and EW scores will be slightly to the right.

In order to make the selection, it may be necessary to temporarily check “Show previous results.”

Any Bridgemate II options – as selected and saved with “OK,” will be saved and active for all future games as long as “Scoring” program remains checked – regardless of the “profile” shown in the “Settings profiles” area.

To capture the “Lead card” and/or “Group Sections” select Bridgemate Control; the other options on this page should match the settings in ACBLscore, F11 → BMO. See Chapter 6 in the User Manual.

When Bridgemate Control is checked, the “Settings profiles” will be active. See page 4 of this write-up.

When using “Bridgemate Control” for basic options:

- Change Verification message to “1” Sec.
- Be sure Enter results as is “American style”
- To have players enter the Lead card use this page.
- Check Group sections for results to show results together across 2-or-more sections. Normally, however, this should be left **unchecked**.
- See Chapter 6 in the User Manual for more information.

- Go to the Bridgemate II tab: **Note:** This tab will only be available after BCS has detected (and shown) the USB Server as “Connected” at least once.

Typical option settings are shown here.

Click on Settings to display the Name settings screen. See page 4 for more information.

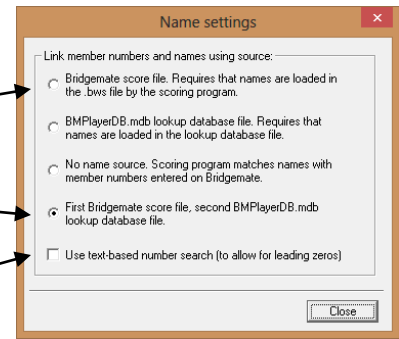
The “Enable RESET functionality” option should **ALWAYS** be checked.

When using the Hand-record feature of the Bridgemate software, check the appropriate “Hand records” option(s).

Note: Leave the “Recording game” options unchecked.

In order to display names on the Bridgemates, use the Names settings screen to tell BCS where to look for the players' names.

- When using a local club database *only*, check:
- When using a **large local database** or the **ACBL National Tournament database**, check the 4th option to cover all . conditions, this 4th option may always be checked – both for local, club database use or large databases.
- When using pseudo player numbers that may start with a zero “0” this option should be checked.

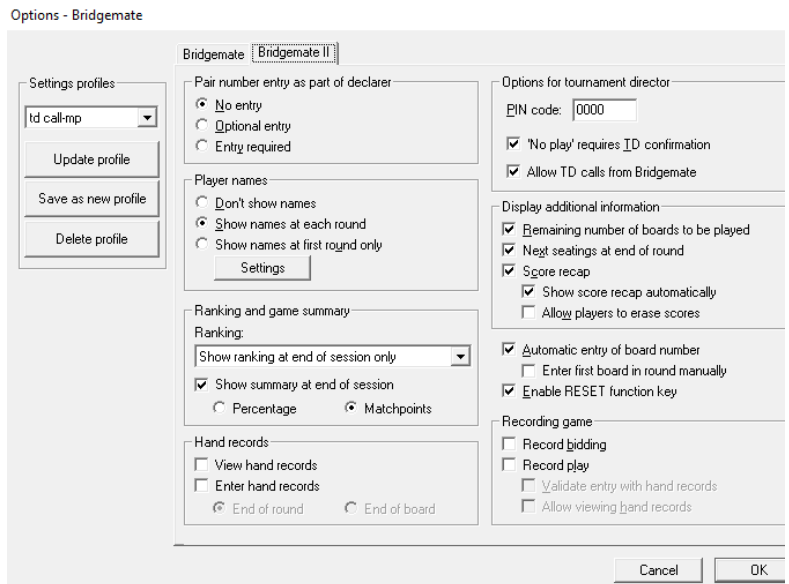


When both “Bridgemate” pages are set, click on OK in lower right – to save.



Using Profiles to store and retrieve Bridgemate option settings.

With Bridgemate Control checked, both the “basic” Bridgemate and Bridgemate II settings can be saved to a “Settings profile.” For different types of games, different profiles can easily be retrieved by selecting a profile from the dropdown list on the left side of the Bridgemate settings window.



Creating, updating and deleting profiles

To create a new profile, set the Bridgemate settings based on your preferences and then click on *Save as new profile*. Enter a name for this profile and press OK to save the profile with the selected settings.

To modify an existing profile, first select a profile from the dropdown list, modify one or more settings and press *Update profile*. The profile is now updated with the latest settings.

To delete a profile, select first a profile from the dropdown list and then press *Delete profile*. The profile is now deleted. The last remaining profile cannot be deleted.

Apply a profile

To apply settings from a profile, select the profile from the dropdown list to update the Bridgemate settings based on this selected profile. Next press OK to close the window and store these settings as current Bridgemate settings. Note: Using OK also “updates” the current profile.

Using a profile when starting the Bridgemate system

If your scoring program (such as ACBLscore) does not support all Bridgemate options, and options can be set as BCS is started: this can be set within BCS:

1. Go to *Tools* → *Options* → *General*, and select tab *General*.
2. Enable *Show Bridgemate options when starting new session* and press OK to save this setting.
3. Close BCS and start Bridgemate from your scoring program.

Every time the Bridgemate system is started by the scoring program, the options window will appear automatically. A different profile may be selected or changes can be made to the Bridgemate settings. Press OK to confirm the settings. The Bridgemate system will now start with the selected settings.