

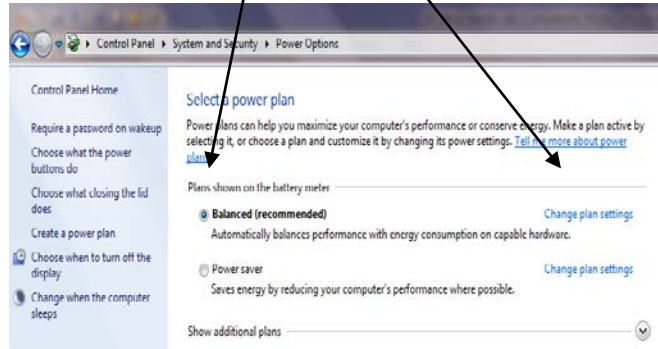
Disable Standby on Windows 7/8/10 computers – Windows 11 see Page 2

Windows 7

1. Click on Start button:
2. Open Control Panel
 - * If Control Panel opens in the Category mode: Select System and Security and then Power Options.
 - * If Control Panel opens and displays icons, click on Power Options.

Click on active “plan settings”

3. See page 2 for Windows 11 guidelines.

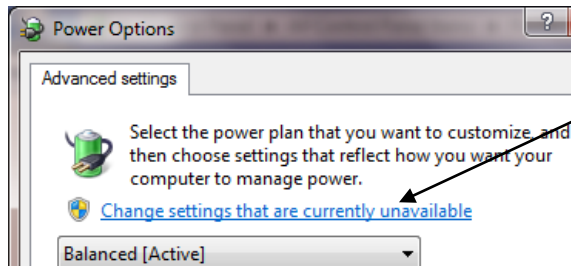


Windows 8 and Windows 10

- a. Right click on the Windows “START” button.
Alternative: Windows Key + X
- b. Click Power Options on the services menu.
- c. Click on “Additional Power Settings” which takes you to step 3 below.

Windows 11 .

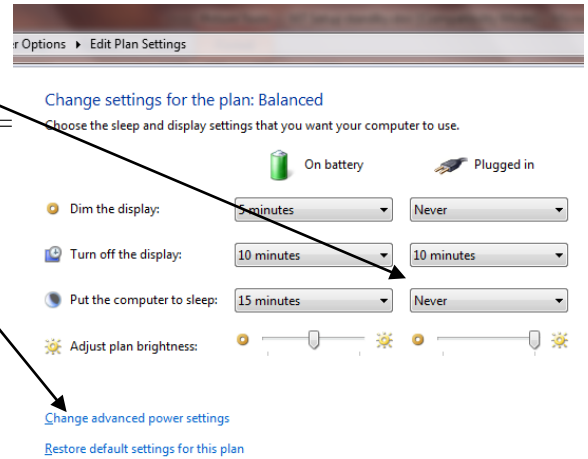
See page 2 for Windows 11 guidelines.



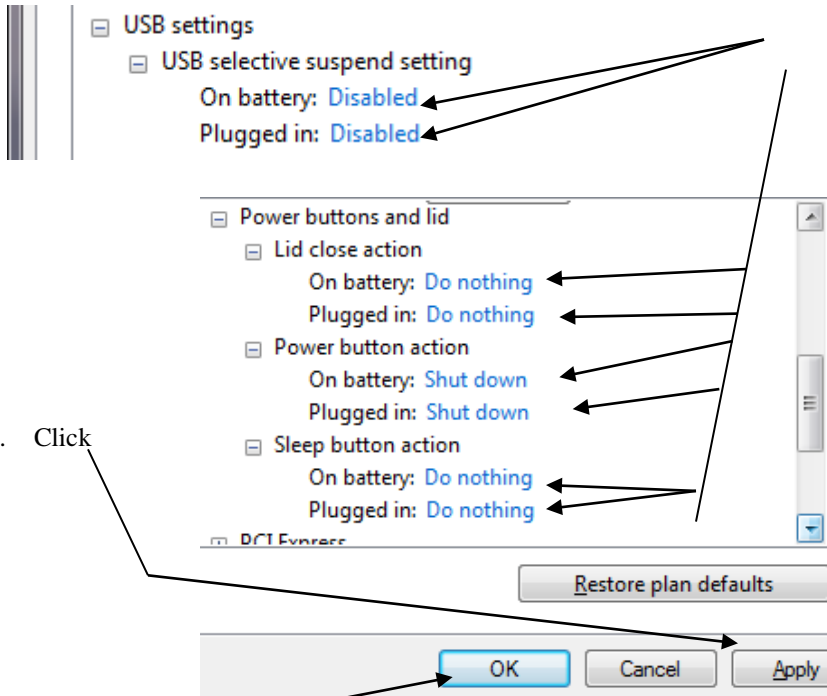
4. Change to Never other settings= optional

5. Click

6. Click

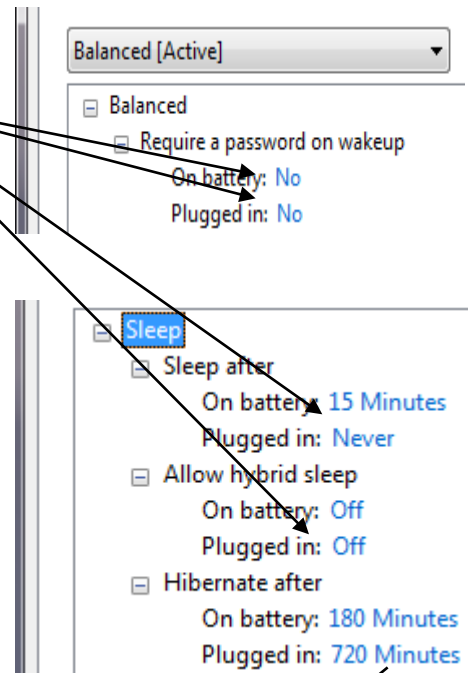


7. Make (or confirm) the following changes on these “Power Options” screens:



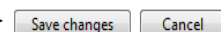
8. Click

9. Click



Plugged in Hibernation can also be “Never”

10. Click (to finish) Standby option settings:



Disable Standby on Windows 11

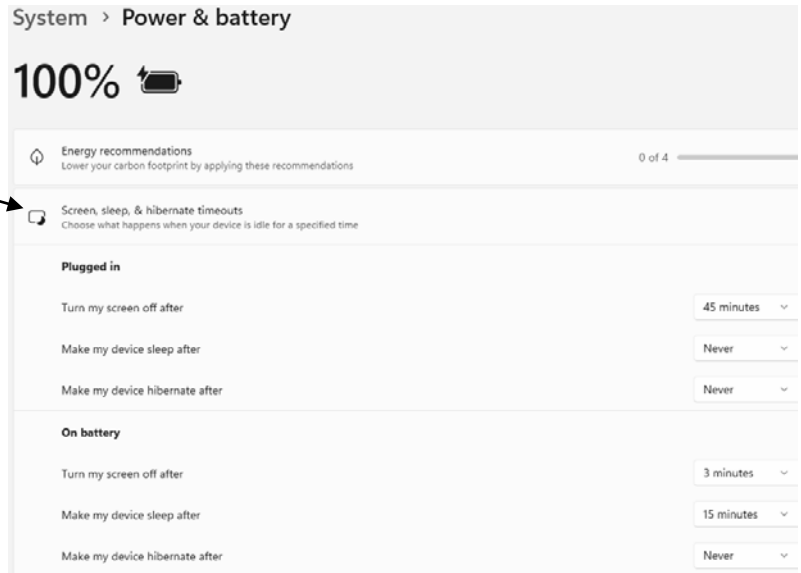
11. Right click on the Windows 11 Start button (or Windows key + X) Left click on “Power Options”

On the “Power and Battery” screen click on “Screen, sleep & hibernate timeouts”

Change the settings as shown on this screen.

The main objective is to be sure the PC **never** goes to sleep when plugged in!

The PC should never be running on battery during a Bridge game. The Battery options may be set as you wish when not using the PC for Bridge.



- +12. There is another area of concern. The Windows operating system will turn off the USB ports if Windows thinks they are not being used. Unfortunately, even though the Bridgmate server interrogates the server once a second, Windows does not seem to recognize this.

There are two different Windows 11 configurations regarding this condition.

- a. The first area to check is the Control Panel. Left click on the Windows start button and type “Control panel” followed by “Enter.” Go to Step 2 above. Look for “USB selective suspend setting.” If it is available, follow Step 7 above to inhibit Windows from selectively shutting off the USB ports power.
- b. Click Device Manager on the services menu If there is no “USB selective suspend setting” shown in Control Panel, go to “Device Manager.” Right click on the Windows “START” button [alternative: Windows Key + X]

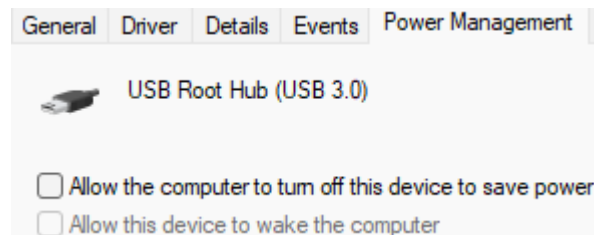
Click on the > to the left of “Universal Serial Bus controllers”

This expands the listing where you will see:

- a. 1 or more “USB Root hub entries:
- b. 1 or more “USB Mass Storage Device” entries
- c. 1 or more”Host Controller” entries

Right click on each of the above entries and then left click on “Properties.”

Left click on “Power Management” and remove the check on “Allow the computer to turn off the device to save power.”



Be sure to do this for the possible second (and third) of all of the possible entries listed above.